

# Norfolk Area Special Educational Needs and/or Disability (SEND) Strategy

Updated spring 2021



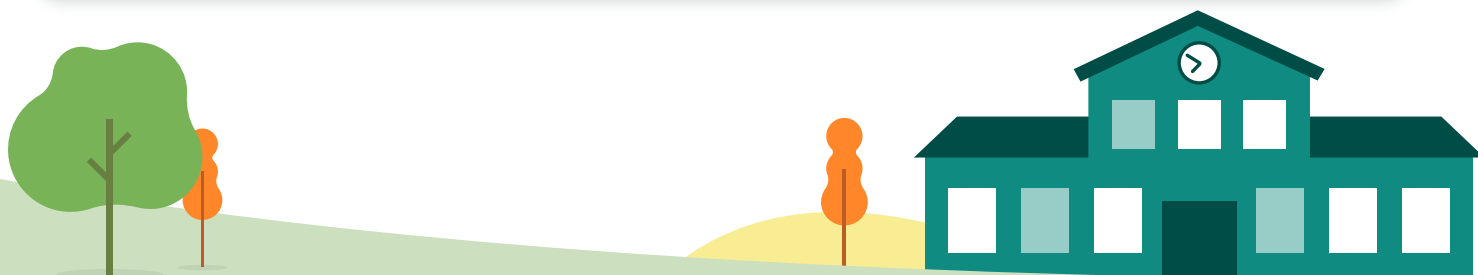
This Norfolk Area SEND Strategy has been updated and developed by representatives from across the council and health services in co-production with parent/carer organisations and Norfolk's education providers.



**click on each logo for more information.**

### What does co-production mean in Norfolk?

Working together and communicating as equals. Understanding and valuing one another's unique insights and expertise to create a plan to bring about positive change.



# Contents

- 4 Introduction
- 6 Local context
- 8 Priorities overview
- 9 **Priority 1** - Working together with children and young people with SEND
- 10 **Priority 2** - Improving what is in place for families and professionals to support children and young people with SEND
- 11 **Priority 3** - Communicating the SEND services and support available in Norfolk
- 12 **Priority 4** - Preparing young people for adult life
- 14 What will the future look like?
- 16 How to find out more



# Introduction

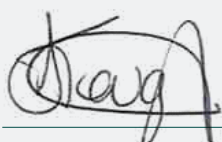
**Our first Norfolk Area SEND Strategy was launched in 2019. Its review was planned for 2020, however a visit from Ofsted and the Care Quality Commission (CQC) plus the challenges of COVID-19 meant that this couldn't happen.**

A great deal has changed, and this is our updated strategy for 2021. Our priorities are based on the outcomes set out by the Children's Strategic Alliance group that Norfolk is a place for every child and young person to FLOURISH. We have committed to "listening to children, young people and their families... supporting inclusion, meeting needs and changing lives together". Their views will tell us what we need to improve, and this information will be used by the council and NHS Clinical Commissioning Group (CCG) to review and develop services.

**As in 2019 we have four main priorities to both improve and transform, they are:**

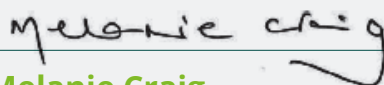
1. Working together with children and young people (CYP) with SEND
2. Improving what is in place for families and professionals to support children and young people with SEND
3. Communicating the SEND services and support available in Norfolk
4. Preparing young people for adult life

Looking forward, it is vitally important that we build on our strengths, trusted relationships and determination to work together, to support children and young people with SEND in Norfolk and change lives together. Despite the challenges we face with COVID-19 we are continuing with our £120 million pound investment to build specialist provision whilst continuing our focus on local mainstream provision.



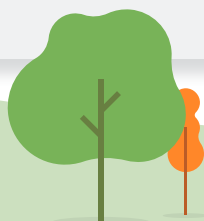
**Sara Tough**

*Executive Director Children's Services*



**Melanie Craig**

*Chief Executive, NHS Norfolk and Waveney Clinical Commissioning Group and Executive Lead for Norfolk and Waveney Health and Care Partnership*







**specialist resource bases (SRB)**  
for learners with a high level of  
special educational needs who are  
educated in mainstream schools

Making sure there  
are specialist  
places for  
children like mine

Developing  
more specialist  
resource bases

More Short  
Breaks near to  
where we live

Listening  
to us



Changing lives together

# Local context

This data gives a snapshot of the SEND landscape in Norfolk now.

## Pupils in Norfolk schools 2020 – reception to year 13



Number of students in  
primary and secondary  
education  
**116,067**



Those with SEN Support  
**15,015**  
**12.9%**

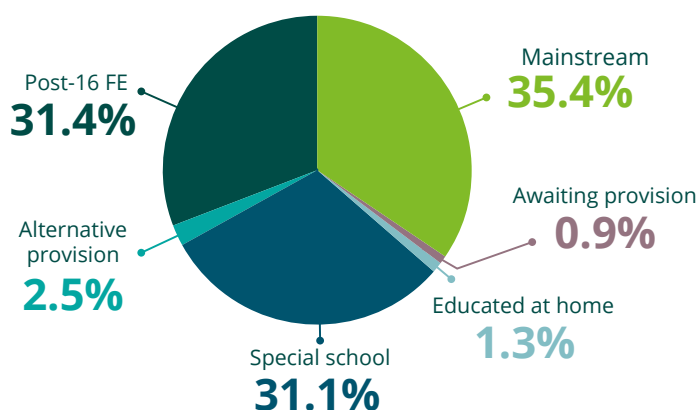


Those with EHCP  
**3,294**  
**2.8%**

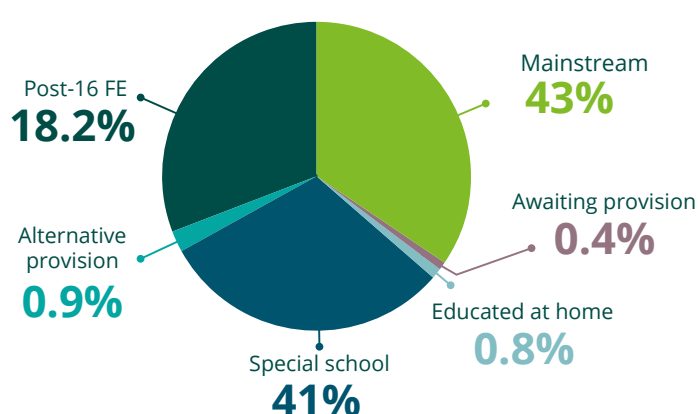


Total number of  
EHCP 0–25  
**6,689**

### SEND students in educational settings Norfolk 2020 – EHCP and SEN Support



### SEND students in educational settings National 2020 – EHCP and SEN Support



## Young people with EHCP in Norfolk by age range 2020 and 2021

Age	Official numbers provided to Dept of Education 2020	Official numbers provided to Dept of Education 2021
Under age 5	159	259
Aged 5 to 10	1,746	2,017
Aged 11 to 15	2,236	2,248
Aged 16 to 19	1,775	1,896
Aged 20 to 25	773	1,043
TOTAL	6,689	7,753

## At 16 destinations by SEN status (state-funded mainstream schools) in National for 2018/19

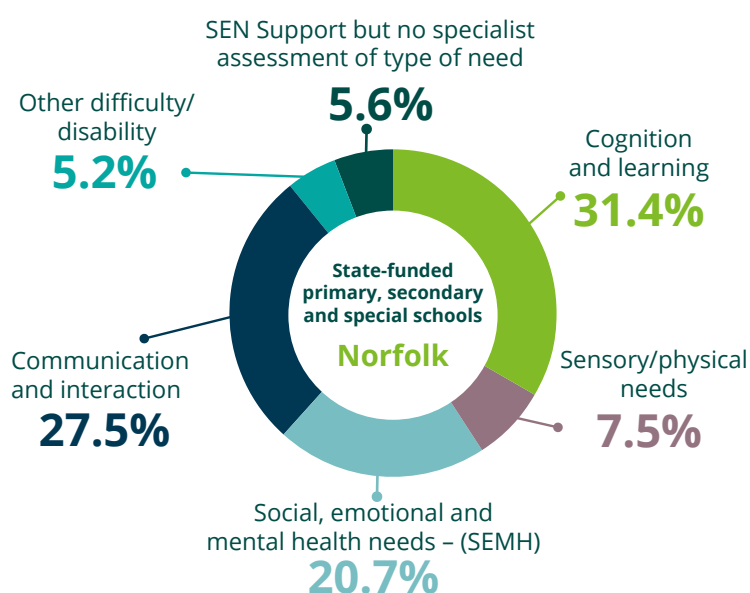
At 16 destinations by identified SEN	National	Norfolk
Sustained education, employment & apprenticeships %	90	91
Sustained education destination %	81	83
Sustained apprenticeships %	4	4
Sustained employment destination %	4	3
Not recorded as a sustained destination%	9	9

## Norfolk permanent exclusion (PEX) rate and 3 Term SEN absence (includes state-funded primary, secondary and special schools) 2018/19

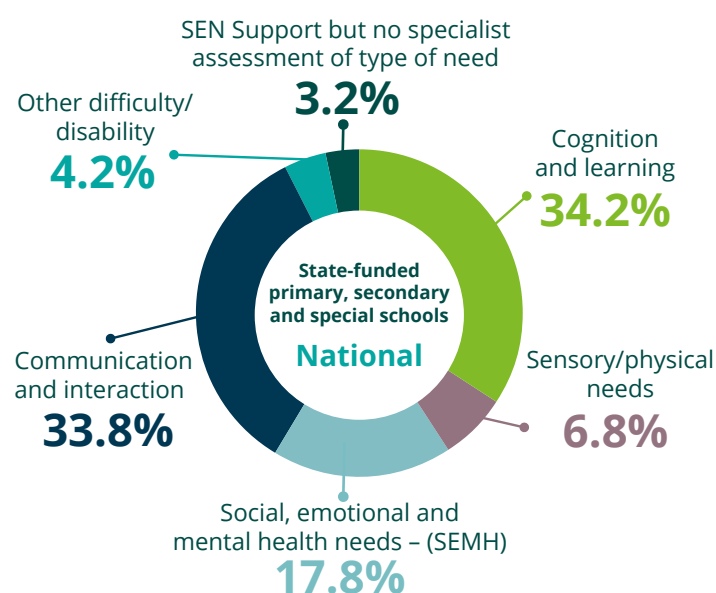
All pupils	Norfolk	PEX Rate %	0.18	11.8%
		Number of pupils	209	11,887
	National	PEX Rate %	0.10	10.9%
		Number of pupils	7,894	71,863
EHCP	Norfolk	PEX Rate %	0.46	24.6%
		Number of pupils	15	701
	National	PEX Rate %	0.15	24.6%
		Number of pupils	390	54,081
SEN Support	Norfolk	PEX Rate %	0.58	17.7%
		Number of pupils	82	2,348
	National	PEX Rate %	0.58	17.9%
		Number of pupils	82	156,890

## Norfolk SEN primary need breakdown 2020 in schools

Norfolk % total pupils with primary need



National % total pupils with primary need



## Destinations of students leaving 16-18 study with SEN in schools and colleges in England, 2018/19 (percentage)

SEN student destinations	School		College	
	England	Norfolk	England	Norfolk
Sustained education (6 months +), apprenticeship or employment	86	88	77	71
Sustained education destination	62	62	44	30
UK higher education institution	48	53	19	13
Further education	8	6	23	15
Other education destinations	7	2	2	3
Sustained apprenticeships	5	6	9	8
Sustained employment destination	18	20	24	33

**New EHC Plans issued within 20 weeks including exceptional cases 20.1% (60.4% nationally)**



Information on page 6 and 7 is from data released in May 2020 by the Department for Education. National data refers to England data.

# Our priorities

## **Priority 1**

**Working together with children and young people (CYP) with SEND**

## **Priority 2**

**Improving what is in place for families and professionals to support CYP with SEND**

## **Priority 3**

**Communicating the SEND services and support available in Norfolk**

## **Priority 4**

**Preparing young people for adult life**



**Changing lives  
together**

Communicating

Understanding

Valuing

Participating

Developing

Co-producing

Consulting

Supporting

Improving

Helping

Changing lives together



# Priority 1

## Working together with children and young people (CYP) with SEND

It is important that the education, health and social care needs of CYP and actions that will help them are identified as soon as possible.

Parents/carers and professionals are supported to work together to understand how they can best help CYP with SEND to learn and develop.

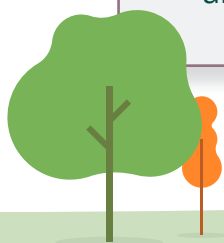
### What needs to happen

- CYP and their parents/carers feel confident about sharing their experiences and that these will be used to shape improvements
- CYP are supported to have an active role in decision making
- Communication about services is clear and understood by CYP and their parents/carers and those working with them
- CYP, their parents/carers and professionals work in co-production to develop ways to share information
- Timely and meaningful assessments are used to plan the support needed to enable CYP to progress

**When we talk about professionals, we mean the people who work to help and support children and young people with SEND**

### The strategy is working when:

- CYP feel included and supported in all areas of their lives and in all settings
- CYP and parents/carers feel that their views are valued and that working in partnership has positive outcomes for them
- CYP are able to access their community with their peers
- Professionals have confidence in their knowledge and skills, know where to go for support and advice, and value working together as part of a wider team around the CYP and their families



# Priority 2

## Improving what is in place for families and professionals to support children and young people (CYP) with SEND

It is important that those who plan and provide services and those who use them work together, ensuring that plans for improvement use all relevant information.

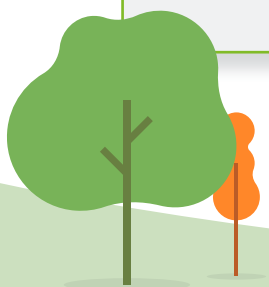
### What needs to happen

- All those working with or volunteering to support CYP have the right skills and training for their roles
- Education, health and social care services for CYP are shaped by a strong commitment to co-production
- All services regularly review how they collect, share and use data
- Those who plan services are using resources effectively
- CYP and their parents/carers are part of conversations about SEND support, know what to expect and are included in decision making
- CYP and their parents/carers have access to information to be able to make choices when making placement decisions

**When we talk about resources, we mean equipment, buildings, people, time and money**

### The strategy is working when:

- CYP and their parents/carers and professionals understand and value working together
- Information is up to date, available to those who need it, and is being used to make a positive difference to the lives of CYP
- Feedback shows that services and resources are having a positive impact



# Priority 3

## Communicating the SEND services and support available in Norfolk

It is important that parents/carers and professionals know how to find out what they can expect, what they can access and how they can all take part in developing plans for improvement.

The Local Offer website is key to sharing SEND information for parents/carers and professionals.

### What needs to happen

- Services produce and develop their information in co-production with children and young people (CYP) and their parents/carers
- Services ensure that information is easy to use and understand, helpful and up to date
- The 2021 review and redesign of the SEND Local Offer website is done with the involvement of parents/carers and professionals
- A wide range of communication methods is used to make sure that information is available to everyone who needs it

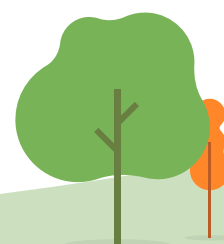
**SEND Local Offer website**  
The place to find SEND information

**The Norfolk local offer**  
The services and support available in the Norfolk area for CYP with SEND and their families

### The strategy is working when:

- CYP Feedback shows that parents/carers and professionals find published information easy to use and to understand, helpful and up to date
- Users report that the SEND Local Offer website is easy to use and to understand, helpful and up to date
- CYP, parents/carers and professionals work together to continuously review and improve the SEND Local Offer website.

When we talk about **services**, we mean organised systems that meet needs, such as schools, colleges, health services, home-to-school transport and social services



# Priority 4

## Preparing young people for adult life

It is important that children and young people (CYP) with SEND are supported from an early age to develop skills that will enable them to increase independence, make choices and plan for their future.

Services are in place to help all CYP with SEND transition successfully into an adult life of their own choosing.

### What needs to happen

- CYP are supported to take an active role in their community, including employment and living an independent adult life
- CYP are supported to understand and look after their health and wellbeing
- Education, health and social care services will work together with CYP and parents/carers to understand and meet the needs of CYP
- Services are shaped by a clear understanding of the needs of CYP and by reviewing the impact of services on their lives
- All CYP and their parents/carers will know where to go for help and support with transition and preparing for adult life

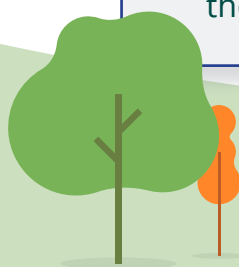
#### **Preparing for adult life (PfAL) outcomes**

**Norfolk has high aspirations for the futures of all CYP and is committed to achieving the four PfAL outcomes, which are:**

- **Being healthy**
- **Having employment**
- **Being part of your community**
- **Independent living**

### **The strategy is working when:**

- CYP can tell others how they are involved within their community and what they want
- Services make information available in a variety of ways for everyone
- Services act on what CYP and parents/carers tell them, make changes and give additional support where needed
- CYP, parents/carers and professionals are working together to help develop the skills the CYP needs to be as independent as possible



# Action plan

These priorities are being taken forward in our Norfolk Area SEND Strategy SEND action plan

# Communicating the support and services for SEND In Norfolk

## Sub Group:

SEND Local Offer User Forum

It is important that parents/carers and professionals know how to find out what they can expect, what they can access and how they can all take part in developing plans for improvement.

The Local Offer website is key to sharing SEND information for parents/carers and professionals.

### Strategic Outcome:

- Services show how the voices of children and young people (CYP), their parents/carers and professionals have shaped their offer
- Feedback shows that parents/carers and professionals find published information easy to use and to understand, helpful and up to date
- Users report that the SEND Local Offer website is easy to use and to understand, helpful and up to date
- CYP, their parents/carers and professionals are actively involved in opportunities to improve the Norfolk local offer

SAP Ref No.	Action	How we will know the action has been successful	Leadership		Target Completion Date	<b>Progress update explanation</b> Colour the cell with a RAG based upon the progress update Red = it is going to be late, ie miss the target date Amber = currently running late but might finish on time Green = on target Blue = complete
			Lead Agency	Action Lead Name		
<b>SEND Local Offer User Forum</b>						
<b>Theme 1 - Services produce and develop their information inco-production with children and young people (CYP) and their parents/carers</b>						
3.1.1	Ensuring all services know about and use the co-production tool-kit.					
3.1.2	From the earliest stage all CYP and parent/carers are empowered to co-produce with services.					
3.1.3	Continuous monitoring and reviewing to ensure they evolve appropriately.					

## Progress update explanation

Colour the cell with a RAG based upon the progress update  
 Red = it is going to be late, ie miss the target date  
 Amber = currently running late but might finish on time  
 Green = on target  
 Blue = complete

This Strategy will be updated in Spring 2022

The **SEND Joint Commissioning Framework** will be updated Spring 2022

This action plan is being co-produced across education, health and social care services with parents/carers organisations and voluntary sector partners



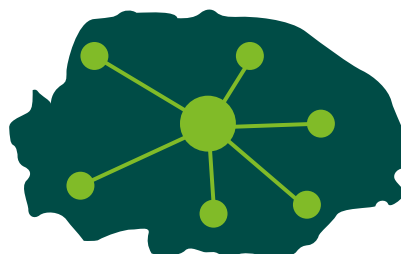
# What will the future look like?

*"listening to children, young people and their families... supporting inclusion, meeting needs and changing lives together"*

means that...



Everyone is committed to working together



Children and young people (CYP) are supported locally



CYP are ready for education, training and/or employment



Services gather feedback and explain what they will do to improve



Services respond to the changing needs of CYP with SEND



Three new specialist schools are opened and existing special schools have more places

## Coming soon:

A page on the SEND Local Offer website will show what CYP themselves say about their life and aims.





**Over a hundred new learning places are created in our specialist resource bases**



**Settings have the resources to meet needs**



**Information is co-produced, accurate and reliable**



**EHCPs are always high quality and within the required timescale**



**Settings confidently identify needs at an early stage**



**Settings have an inclusive culture, supporting CYP and their needs**



**CYP feel confident to aim high and have ownership of their future**

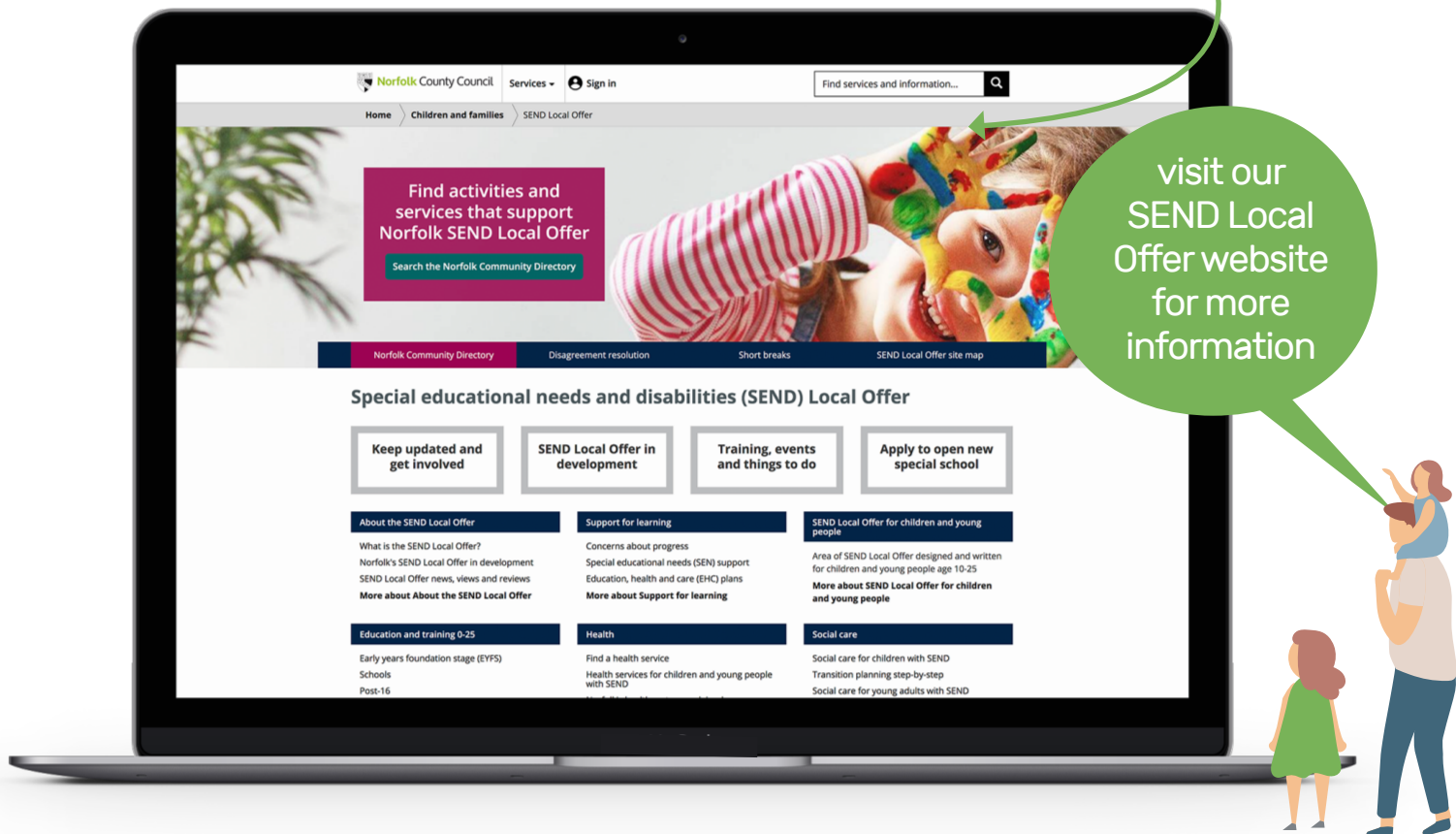


**Improved quality and sufficiency of placements for looked after children with disabilities**

# How to find out more

[www.norfolk.gov.uk/send](http://www.norfolk.gov.uk/send)

## SEND Local Offer website



**SEND Roadshow** – Information and participation events for parents/carers who have a child with SEND



**SEND Forum** – Termly events for SENCOs and other SEND professionals, to get updates and specialist advice and support.



**SEND Youth Forum** – New youth forum for 11–25-year-olds where they can share experiences, discuss issues and create change.



**click on each logo for more information.**